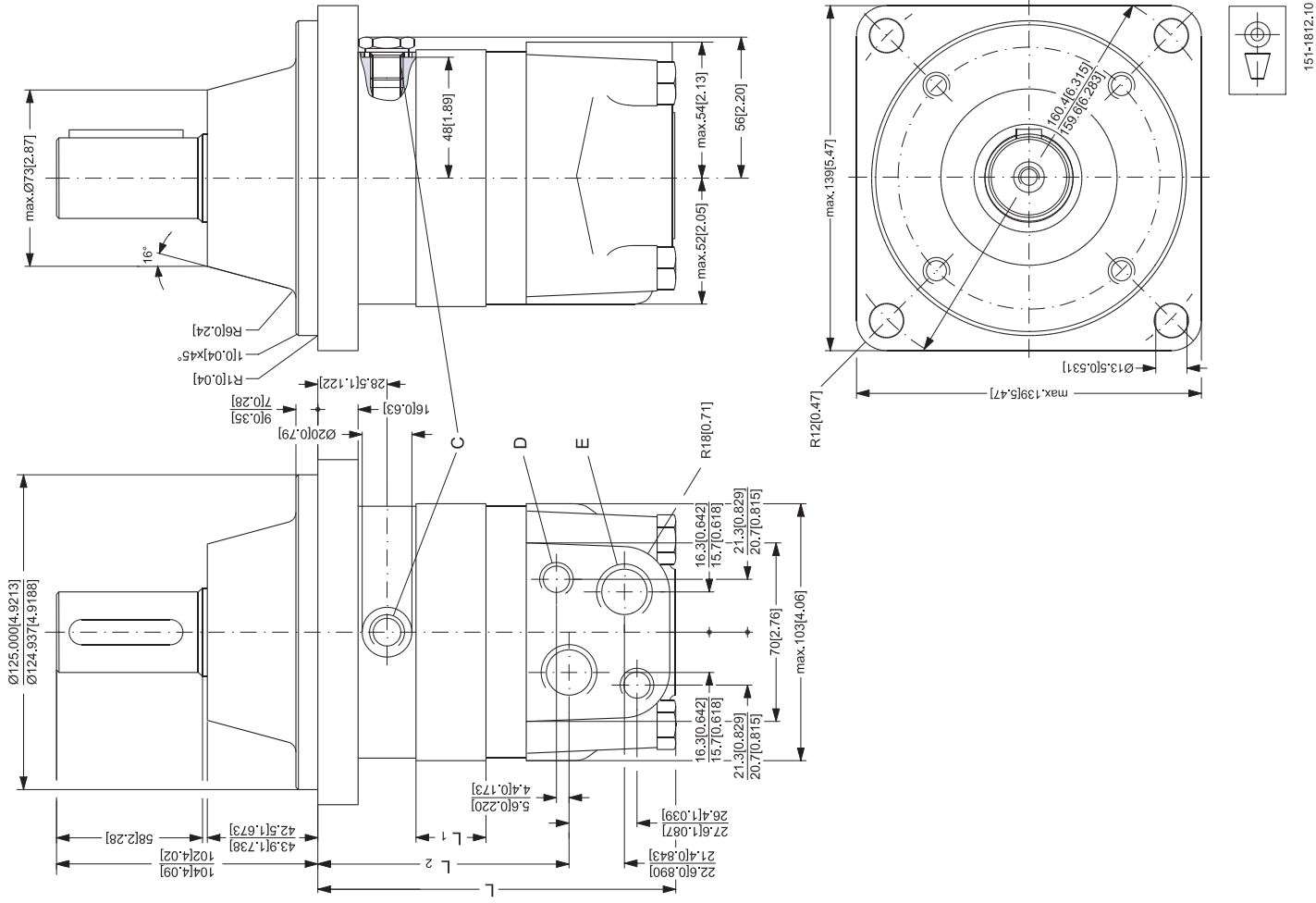


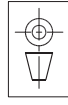
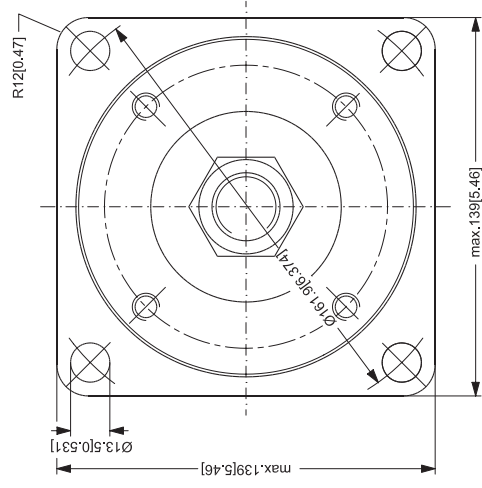
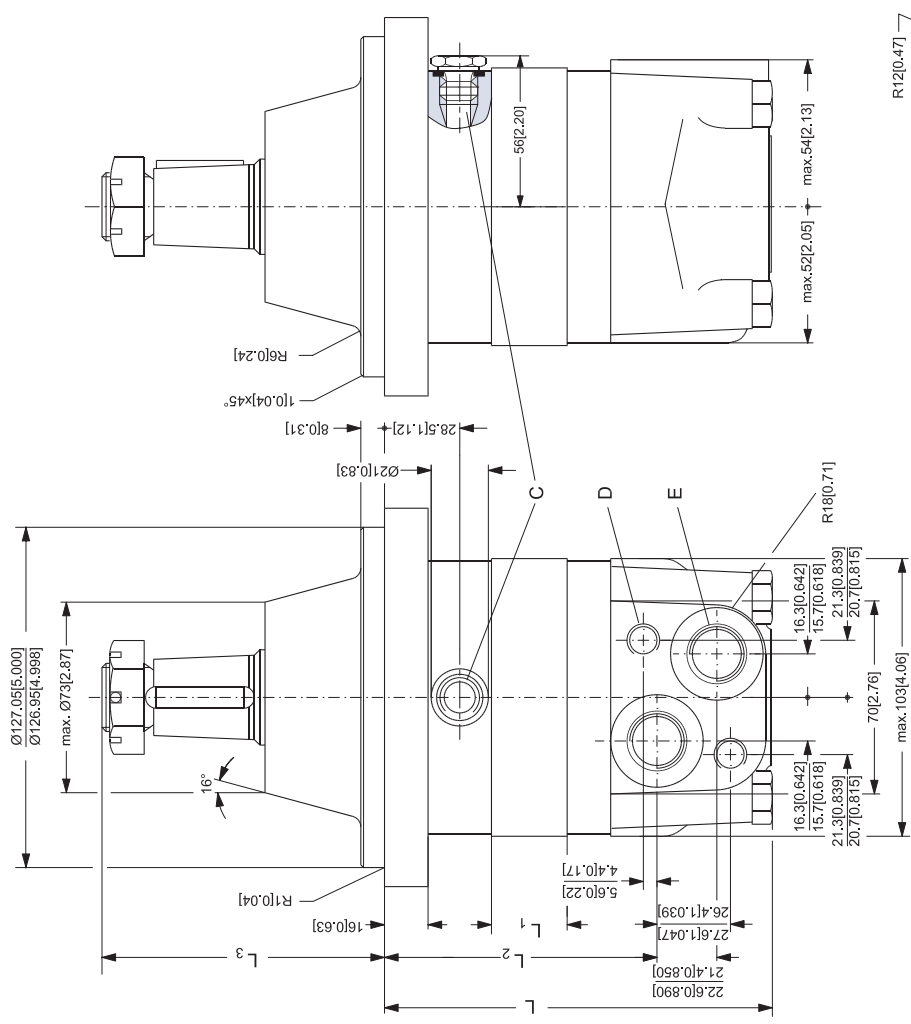
WHEEL



Type	L _{max} mm [in]	L ₁ mm [in]	L ₂ mm [in]
OMSW	129	14.0	87
80	[5.08]	[0.551]	[3.43]
OMSW	132	17.4	90
100	[5.20]	[0.685]	[3.54]
OMSW	137	21.8	95
125	[5.39]	[0.858]	[3.74]
OMSW	143	27.8	101
160	[5.63]	[1.094]	[3.98]
OMSW	150	34.8	108
200	[5.91]	[1.370]	[4.25]
OMSW	158	43.5	116
250	[6.22]	[1.713]	[4.57]
OMSW	170	54.8	128
315	[6.69]	[2.157]	[5.04]
OMSW	183	68.4	142
400	[7.20]	[2.693]	[5.59]

C: Drain connection
 G: 1/4; 12 mm [0.47 in] deep
 D: M10; 13 mm [0.51 in] deep
 E: G 1/2; 15 mm [0.59 in] deep

WHEEL



151-1982.10

Output shaft	L ₃ mm [in]
Cyl. 1.25 in	max. 94 [3.70]
	min. 92 [3.62]
Tapered 1.25 in	max. 104 [4.09]
	min. 102 [4.02]

- C: Drain connection
7/16" - 20 UNF;
12 mm [0.47 in] deep
- D: O-ring boss port
M10; 13 mm [0.51 in] deep
- E: O-ring boss port
7/8" - 14 UNF;
16.7 mm [0.657 in] deep

Type	L _{max} mm [in]	L ₁ mm [in]	L ₂ mm [in]	L ₃ mm [in]
OMSW 80	130 [5.12]	140 [5.51]	88 [3.46]	max. 94 [3.70]
OMSW 100	133 [5.24]	17.4 [0.685]	91 [3.58]	min. 92 [3.62]
OMSW 125	138 [5.43]	21.8 [0.858]	96 [3.78]	max. 104 [4.09]
OMSW 160	144 [5.67]	27.8 [1.094]	102 [4.02]	min. 102 [4.02]
OMSW 200	151 [5.94]	34.8 [1.370]	109 [4.29]	
OMSW 250	159 [6.26]	43.5 [1.713]	117 [4.61]	
OMSW 315	171 [6.73]	54.8 [2.157]	129 [5.08]	
OMSW 400	184 [7.24]	68.4 [2.693]	142 [5.59]	
OMSW 500	184 [7.24]	68.4 [2.693]	142 [5.59]	