

Linear cable engine



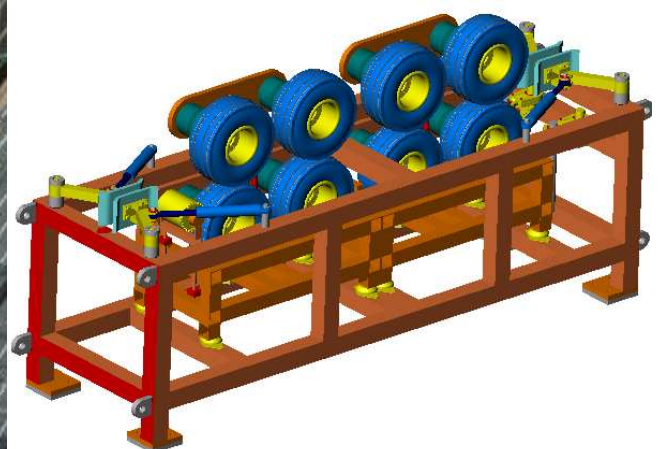
Performance: up to 3 tons /unit, possibilities to mount 3-4 units after one and another to reach 9-12 tons.

(Two units on the picture below) Maximum cable diameter: Ø300mm



**Length= 3250mm
Width= 1000mm
Height= 1050mm (closed)**

Weight= 2300kg



Växjö **Hydraulservice AB**

Linear cable engines 3 ton

Main details:

Main pump	119 cc
Electric-motor	30 kW
Q-max	172 l/min
Hydraulic motor	8 pcs 800/400 cc

Calculations based on wheel diameter Ø460mm

with installed capacity 30 Kw

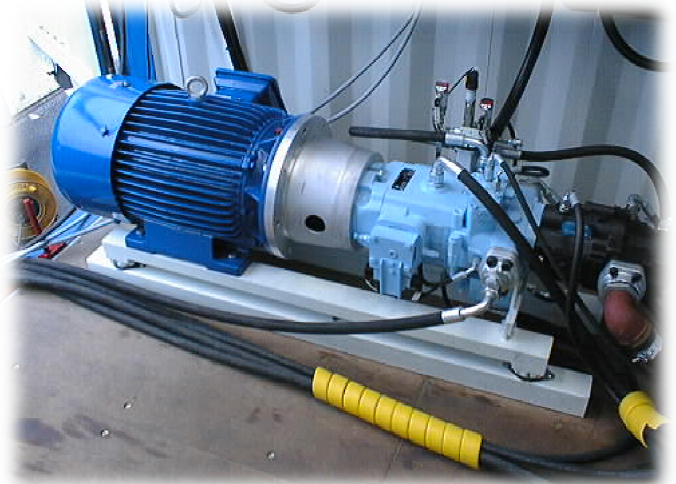
Speed	Low gear	Distance	Distance	Distance	Power
%	r / min	Meter / min	Km / h	Knots	Torque kN
10	7	10	0,6	0,3	30
20	18	26	1,6	0,8	30
30	30	43	2,6	1,4	19
40	44	64	3,8	2,1	13
50	52	75	4,5	2,4	10

Speed	High gear	Distance	Distance	Distance	Power
%	r / min	Meter / min	Km / h	Knots	Torque kN
10	-				
20	-				
30	26	38	2,3	1,2	15
40	37	53	3,2	1,7	14
50	49	71	4,2	2,3	11
60	60	87	5,2	2,8	9
70	74	107	6,4	3,5	7,5
80	86	124	7,5	4,0	6
90	100	145	8,7	4,7	5
100	102	147	8,8	4,8	5

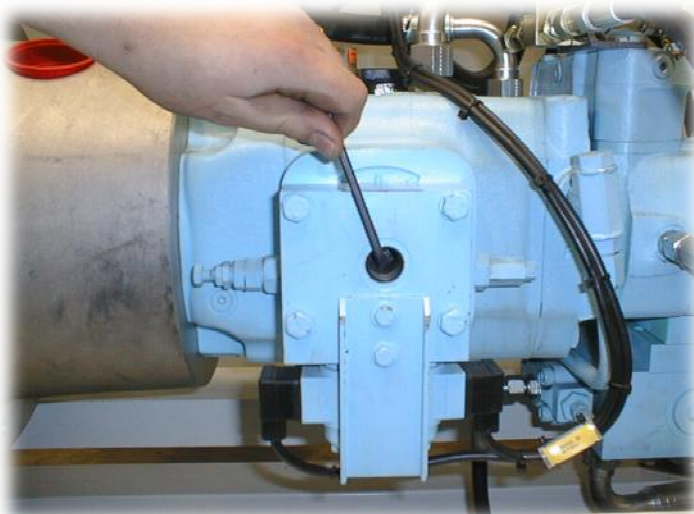
Power unit

The power unit is mounted inside a container, two linear cable engines can be supplied on one container

(the unit on the picture below is to supply one linear cable engine)



In case of 24Vdc supply failure,
The hydraulic pump can be maneuvered manually.



Controls



The machine is operated with this display above,



The adjustable controls for cable control is maneuvered from the buttons on the cable unit.

In case of 24Vdc failure, they can also be maneuvered by handpumps.

Some controls is also available by IR remote, transducer is displayed on the picture below.

