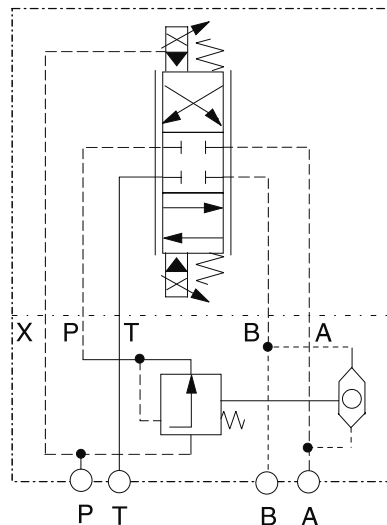


2-way pressure compensators series LCM are sandwich plate valves designed for stacking beneath a proportional directional control valve with a standardised mounting pattern.

The valve maintains a constant pressure differential between ports P and A or P and B across the directional valve. When the cross sectional opening of the directional valves is held steady, a constant flow rate is achieved, regardless of consumer load fluctuations.

The control pressure applied to the spring side of the compensator spool is supplied from port A or B via a shuttle valve. Flow rate regulation is automatically effective in the port with the highest pressure.

Application example

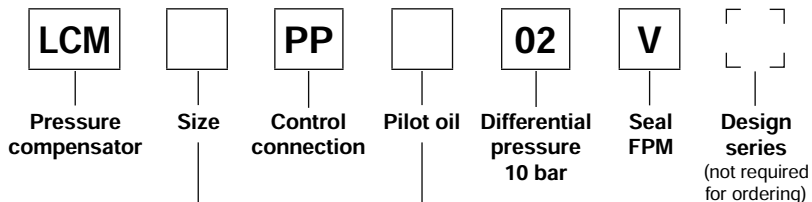


Proportional DC valve model D31FB with 2 way pressure compensator LCM3 maintains a constant flow rate.

The diagram shows the design according to code X.



Ordering Code



Code	Size
2	NG06
3	NG10

Code	Pilot oil
omit	internal
X ¹⁾	external

¹⁾ NG10 only

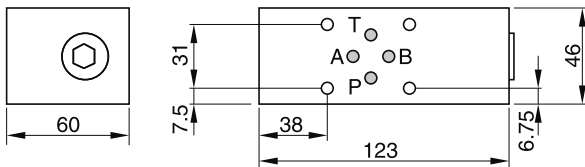
Technical Data / Dimensions

Technical data

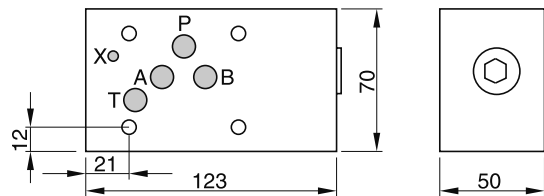
General		
Series		LCM2 LCM3
Size		NG06 NG10
Mounting interface		NFPA D03 CETOP 3 NFPA D05 CETOP 5
Ambient temperature	[°C]	-20...+50
MTTF _D value	[years]	150
Hydraulic		
Max. operating pressure	[bar]	350 350
Pressure differential	[bar]	10 10
Fluid		Hydraulic oil according to DIN 51524...51525
Fluid temperature	[°C]	-20...+80
Viscosity range	[cSt] / [mm ² /s]	12...230
Filtration		ISO 4406 (1999); 18/16/13 (meet NAS 1638:7)

Dimensions

LCM2



LCM3



Mounting screws: BK 403 (4 x M5 x 90)

For mounting screws connected with the directional valves D1 or D31.

Mounting screws: BK 412 (4 x M6x 90)

The views show the mounting surface for the directional valve.